

INSTALLATION GUIDE

MODULAR GATES



THANK YOU FOR CHOOSING ONE OF OUR QUALITY PRODUCTS. WE ARE THE INDUSTRY LEADERS IN COST EFFECTIVE, ACOUSTIC AND BOUNDARY WALLS. THIS PRODUCT WILL STAND THE TEST OF TIME AND WITHSTAND THE ELEMENTS IF INSTALLED IN ACCORDANCE WITH THESE GUIDELINES.



GATES

ModularWalls manufactures solid modular acoustic gates to exacting measurements and aesthetic requirements to blend with your Modular Wall. For those requiring slatted gates, ModularWalls is available to advise on suitable local suppliers.

NOTE


It is recommended that the reader pays particular attention to items identified as a NOTE in this manual to ensure a satisfactory installation and that the long term performance of the products.

For correct finishing of your ModularWalls product, you must paint or seal the panels within 30 days of installation.

BEFORE YOU START

The recommendations detailed by ModularWalls in this guide are formulated along the lines of good building practice. They form a "common-sense" approach and are not intended to be an exhaustive statement of all the relevant data. Further, as the success of projects depend on factors outside the control of ModularWalls (e.g. quality of workmanship, particular design, detail requirements, etc.), we accept no responsibility for, or in connection with, the quality of the projects or their suitability when completed.

If you are in any doubt please seek independent advice or contact ModularWalls. We are always happy and available to answer questions regarding installation procedures, no matter how small or insignificant you think they may be. 7 day technical and installation advice is available on 1300 556 957.



7 DAY A WEEK TECHNICAL
AND INSTALLATION ADVICE IS AVAILABLE
BY PHONING 1300 556 957 AND SELECTING
THE AFTER HOURS OPTION

TOOLS NEEDED



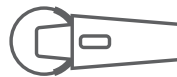
Hex Driver Bit



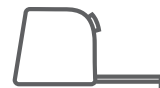
Drill/Driver



Spirit Level



Angle Grinder



Tape Measure

STEP 1:

SETTING YOUR POST POSITIONS TO SUIT YOUR GATE WIDTH

NOTE: Depending on your soil conditions in conjunction with the weight of the gate being installed, you will generally require a deeper footing for the gate support post. Please seek advice from ModularWalls before proceeding.

For example, if your gate is 900mm wide you should generally leave a minimum gap of 20mm more than the gate width to allow for the hinges and latch. This is not a definitive measurement but only a guide based upon known required gaps for the hinges & latch we recommend as stated below.

HINGES – We use and recommend the hinges named 'TruCLOSE by D&D technologies' (product code: TCA1RP) which are available through ModularWalls or from Bunnings and most reputable hardware stores. These hinges are made from very durable polymer plastic and have a self closing function.



STEP 2:

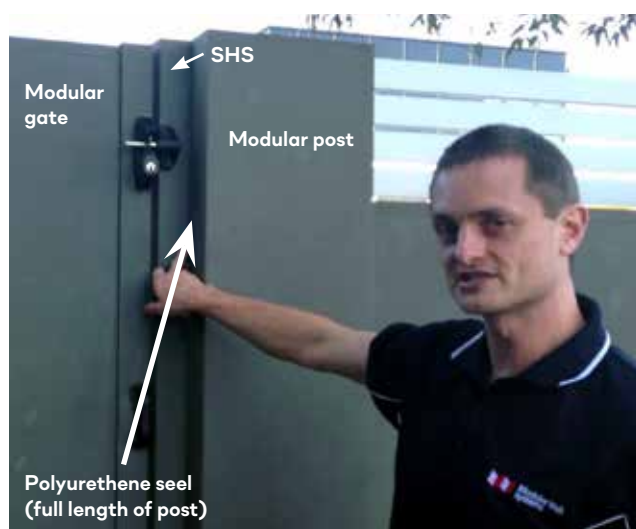
SECURING HINGES TO YOUR MODULAR POST

Every ModularWalls style has a slightly different attachment method. We typically recommend inserting a steel SHS into the open rebate of the post on either side of the gate opening. See example picture of VogueWall Classic below.



Trial fit the SHS into your post before setting the post into concrete so as to accurately determine what your gate opening will be.

For example, if you have a gate which is 900mm wide, we recommend that the opening is around 920mm. Set your first post and SHS into the post hole foundation as one. Either accurately measure or cut timber spacer at 920mm to ensure correct spacing of the opposing post.



After installation but before hanging your gate, apply a polyurethane seal between the SHS and the modular post.

STEP 3:

POSITIONING YOUR GATE

Make sure your hinges are firstly secured to your post.

Place your gate between the posts and use packing shims to obtain the desired height. Also take care to make sure the gaps on either side of the gate are correct. When you are happy your gate is in the correct position, secure your gate to the hinges.

Carefully remove the packing shims and check the operation of the gate.



STEP 4:

LATCHES

We use and recommend a latch called 'lokkLATCH by D&D technologies' (product code: LLDABR-L) which is available through ModularWalls or from Bunnings and most reputable hardware stores. This latch is made from very durable polymer plastic and has the advantage of allowing keyed locking and unlocking from both sides of the gate.

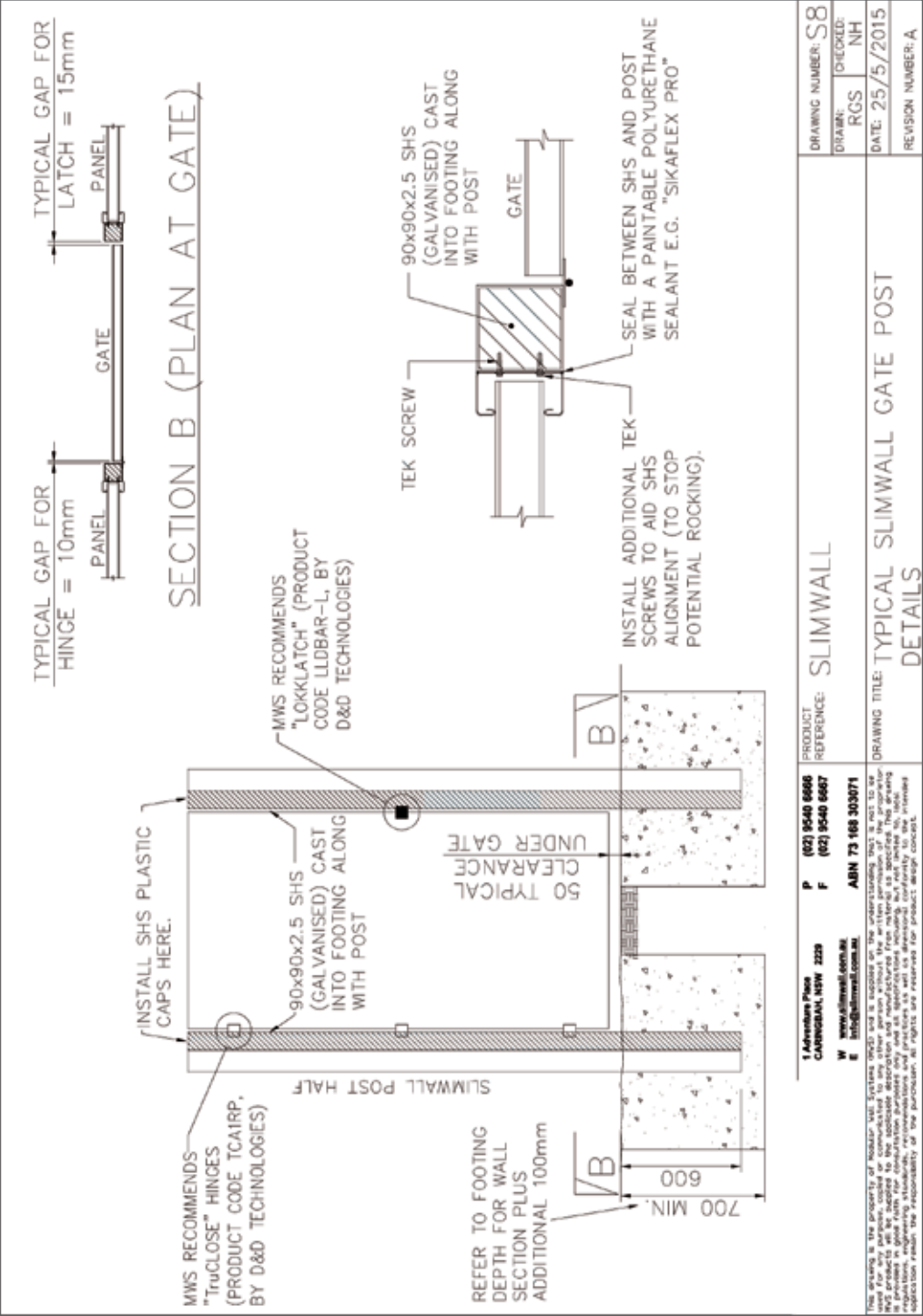
Follow the manufacturer's instructions for latch installation or contact ModularWalls directly for advice.



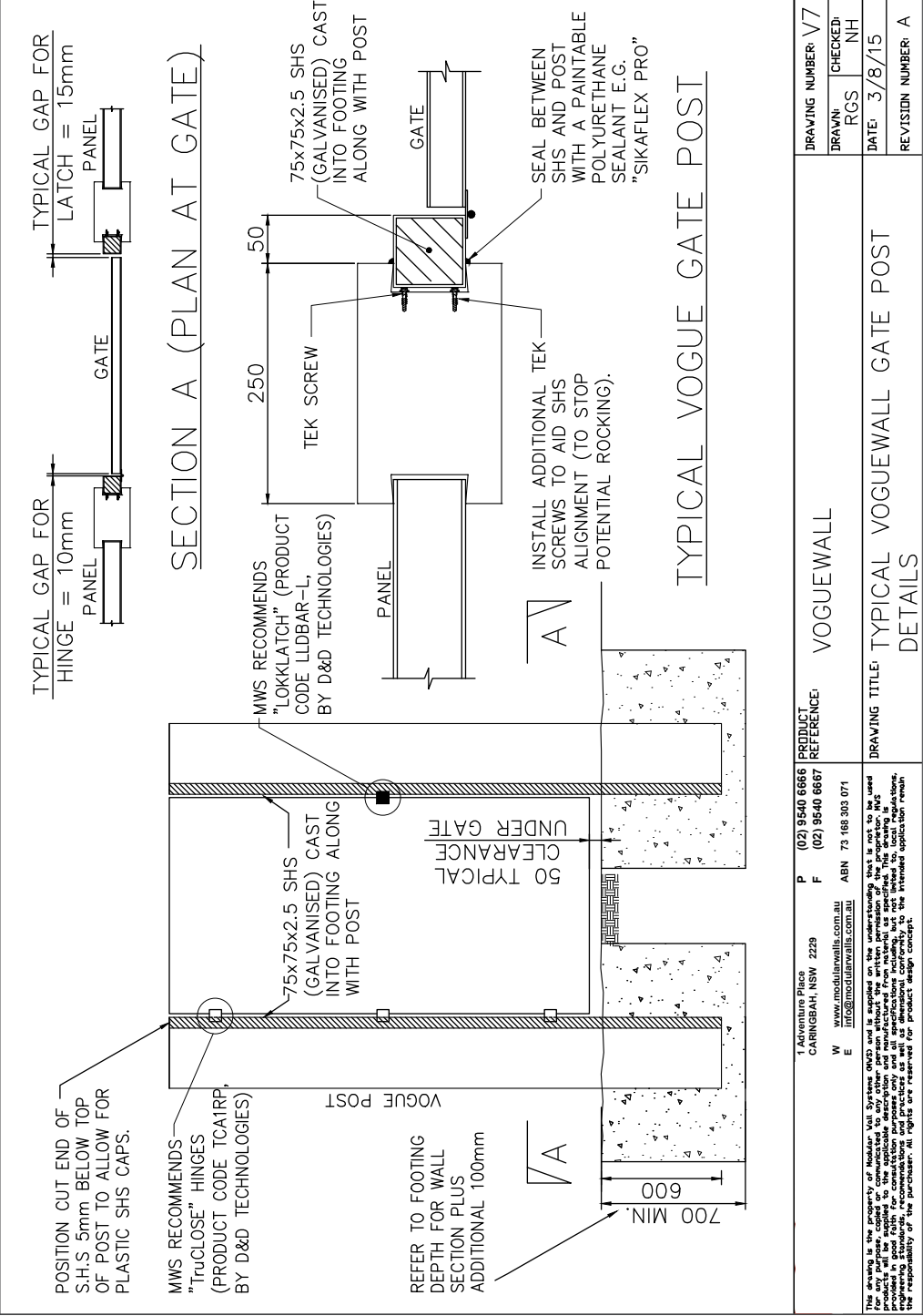
TECHNICAL DRAWINGS

The following technical drawings show gate installation specifications according to each ModularWall style. If your wall style is not featured, please seek assistance from ModularWalls by calling 1300 556 957 or emailing to info@modularwalls.com.au.

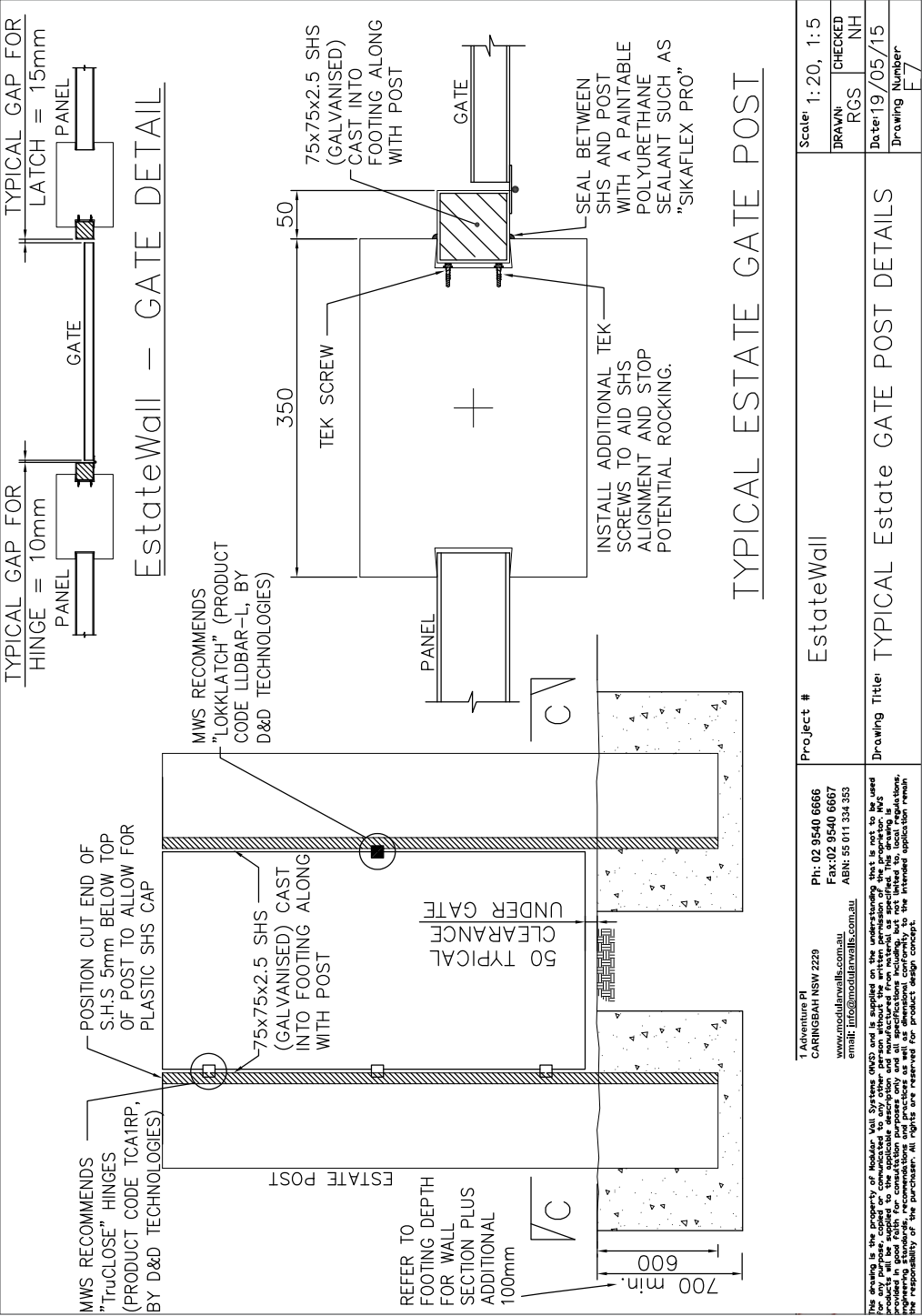
SLIMWALL CLASSIC



VOGUEWALL CLASSIC



ESTATEWALL CLASSIC



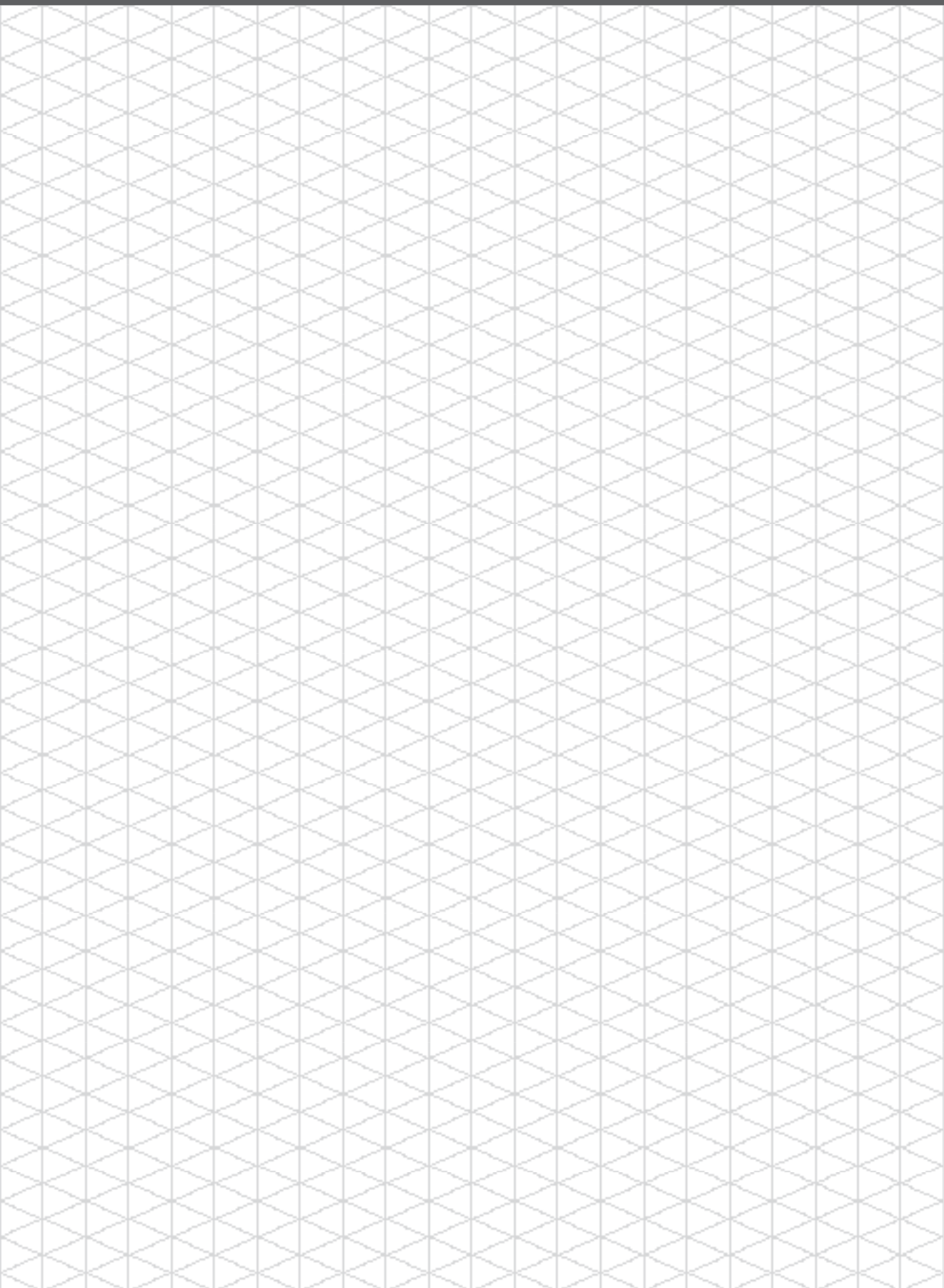
T Adventure Pl CARINGBAH NSW 2229 Ph: 02 9540 6666 Fax: 02 9540 6667 www.modularwalls.com.au ABN: 55 011 334 353 email: info@modularwalls.com.au		Project # EstateWall	
<p>This drawing is the property of Modular Wall Systems Pty Ltd and is supplied on the understanding that it is not to be used for any purpose, called to, connected to, or in any way, without the written permission of the proprietor. No liability is accepted by the proprietor for any loss or damage, in any way, arising from the use of this drawing. It is provided in good faith for consultation purposes only and all specifications including, but not limited to, local regulations, codes of practice, and standards, must be obtained from the relevant authorities. The internet application remains the responsibility of the purchaser. All rights are reserved for product design concept.</p>		Scale: 1:20, 1:5	
		DRAWN: RGS	CHECKED: NH
		Drawing Title: TYPICAL Estate GATE POST DETAILS	
		Date: 19/05/15	
		Drawing Number: E7	

This drawing is the property of Modular Wall Systems Pty Ltd and is supplied on the understanding that it is not to be used for any purpose, copied or communicated to any other person without the written permission of the proprietor. MWS provides its drawings and designs as advisory only and does not warrant or accept any liability for the accuracy or completeness of the information provided in good faith for consultation purposes only and all specifications including, but not limited to, local regulations, standards and codes of practice, shall be subject to the responsibility of the purchaser. All rights are reserved for product design concept.

NOTES:

A large rectangular area filled with a light gray grid pattern, intended for handwritten notes. The grid consists of thin, light gray lines forming a series of small squares across the entire page.

NOTES:



WITH A REPUTATION FOR QUALITY
AND INNOVATION, MODULARWALLS®
PROVIDED REVOLUTIONARY WAYS TO
CREATE STYLISH AND COST-EFFECTIVE
WALLS AND FENCING.

7 DAY A WEEK TECHNICAL AND
INSTALLATION ADVICE IS AVAILABLE
BY PHONING 1300 556 957 AND
SELECTING THE AFTER HOURS OPTION
www.modularwalls.com.au



MODULARWALLS®